


Features

- Exceeds Requirements of EIA-485 Standard
- Data Rate: 500 kbps
- Support Failsafe function
- Low Power Consumption: < 1 μ A Standby Supply Current
- Large Receiver Hysteresis: 60mV
- Up to 256 Nodes on a Bus (1/8 unit load)
- Wide Supply Voltage 4.5V to 5.5V
- SOP8 Package for Backward Compatibility
- Bus-Pin Protection:
 - ±18 kV HBM protection
 - ±12 kV IEC61000-4-2 Contact Discharge

Description

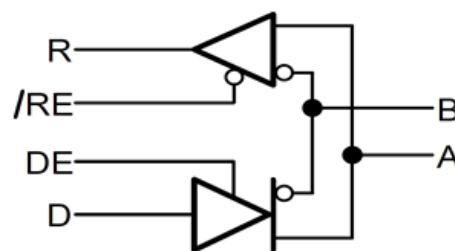
The TPT485E is 4.5V~5.5V powered transceivers that meet the RS-485 and RS-422 standards for balanced communication. Driver outputs and receiver inputs are protected against ± 18 kV ESD strikes without latch-up. Transmitters in this family deliver exceptional differential output voltages as 2.5V (min) in 5Vcc power supplier, into the RS-485 required 54 Ω load, for better noise immunity. These devices have very low bus currents so they present a true “1/8 unit load” to the RS-485 bus. This allows up to 256 transceivers on the network without using repeaters. Receiver (RX) inputs feature a “Full Fail-Safe” design, which ensures a logic high Rx output if Rx inputs are floating, shorted, or on a terminated but undriven bus. The TPT485E is available in an SOP8 package, and is characterized from -40°C to 125°C .

 3PEAK and the 3PEAK logo are registered trademarks of 3PEAK INCORPORATED. All other trademarks are the property of their respective owners.

Applications

- E-Metering Networks
- HVAC Systems
- Video Surveillance Systems
- DMX512-Networks

Simplified Schematic



TPT485E

±18K ESD Protection, RS-485 Transceiver

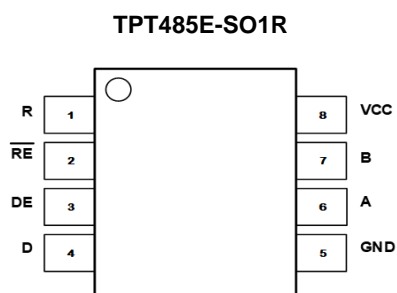
Revision History

Date	Revision	Notes
2019/3/27	Rev. Pre 0.1	Definition Draft
2019/9/10	Rev. Pre 0.2	Update ESD data
2019/9/25	Rev. 0	Final version
2020/7/24	Rev. A	Fix some typo, update DI to D

Order Information

Model Name	Order Number	Package	Transport Media, Quantity	Marking Information
TPT485E	TPT485E-SO1R	8-Pin SOP	Tape and Reel 4,000	T485E

Pin Configuration and Functions



Pin No.	Pin Name	I/O	Description
1	RO	Digital output	Receiver Output.
2	/RE	Digital input	Receiver Output Enable.
3	DE	Digital input	Driver Output Enable.
4	D	Digital input	Driver Input.
5	GND	Ground	Ground.
6	A	Bus input/output	Noninverting Receiver Input A and Noninverting Driver Output A.
7	B	Bus input/output	Inverting Receiver Input B and Inverted Driver Output B.
8	V _{CC}	Power	Power Supply.

Functional Table

DRIVER PIN FUNCTIONS

INPUT	ENABLE	OUTPUTS		DESCRIPTION
		A	B	
NORMAL MODE				
H	H	H	L	Actively drives bus High
L	H	L	H	Actively drives bus Low
X	L	Z	Z	Driver disabled
X	OPEN	Z	Z	Driver disabled by default
OPEN	H	H	L	Actively drives bus High

RECEIVER PIN FUNCTIONS

DIFFERENTIAL INPUT	ENABLE	OUTPUT	DESCRIPTION
NORMAL MODE			
V _{IT+} < V _{ID}	L	H	Receive valid bus High
V _{IT-} < V _{ID} < V _{IT+}	L	?	Indeterminate bus state
V _{ID} < V _{IT-}	L	L	Receive valid bus Low
X	H	Z	Receiver disabled
X	OPEN	Z	Receiver disabled
Open, short, idle Bus	L	H	Out of polarity correction time

Absolute Maximum Ratings

V _{CC} to GND.....	-0.3V to +7V
Input Voltages D, DE, /RE.....	-0.3V to (VCC + 0.3V)
I/O Voltages A, B	-15V to +15V
A, B (Transient Pulse Through 100Ω).....	±100V
R.....	-0.3V to (VCC +0.3V)
Short Circuit Duration A, B	Continuous
ESD Rating.....	See Specification Table

*** Note:** Stresses beyond those listed under Absolute Maximum Ratings may cause permanent damage to the device. Exposure to any Absolute Maximum Rating condition for extended periods may affect device reliability and lifetime.

Recommended Operating Conditions

Supply Voltage.....	4.5V to 5.5V
Temperature Range.....	-40°C to +125°C
Bus Pin Common Mode Voltage Range	-7V to +12V
Thermal Resistance, ΘJA (Typical)	
8-Pin SOP Package	136°C/W
Maximum Junction Temperature (Plastic Package)	+150°C
Maximum Storage Temperature Range	-65°C to +150°C

ESD Rating

		Value	Unit
Contact Discharge, per IEC 61000-4-2	Bus Pin	12	kV
HBM, per ANSI/ESDA/JEDEC JS-001 / ANSI/ESD STM5.5.1	Bus Pin	18	kV
	All Pin Except Bus Pin	4	kV
CDM, per ANSI/ESDA/JEDEC JS-002		1500	V

Electrical Characteristics

Test Conditions: VCC = 5V, Over operating free-air temperature range (unless otherwise noted)

Parameter		Conditions		Min	Typ	Max	Units
Driver							
V _{OD}	Driver differential-output voltage magnitude	RL = 60 Ω, -7V≤V test ≤12V	See Figure 1B	2.0	3.5		V
		RL = 54 Ω (RS-485)	See Figure 1A	2.0	3.4		
		RL = 100 Ω (RS-485)		2.7	3.7		
Δ V _{OD}	Change in magnitude of driver differential-output voltage	RL = 54 Ω, CL=50pF	See Figure 1A	-50		50	mV
V _{OC(SS)}	Steady-state common-mode output voltage	Center of two 27-Ω load resistors	See Figure 1A	1	VCC/2	3	V
ΔV _{OC}	Change in differential driver common-mode output voltage			-65		65	mV
V _{OC(PP)}	Peak-to-peak driver common-mode output voltage				600		
I _{OS}	Driver short-circuit output current	I _{OS} with A shorted to B			90	110	mA
Receiver							
V _{IT+}	Positive-going receiver differential-input voltage threshold				-100	-15	mV
V _{IT-}	Negative-going receiver differential-input voltage threshold			-240	-150		mV
V _{HYS} ⁽¹⁾	Receiver differential-input voltage threshold hysteresis (V _{IT+} - V _{IT-})				60		mV
V _{IH}	Logic Input High Voltage	D, DE, RE		2			V
V _{IL}	Logic Input Low Voltage	D, DE, RE				0.8	V
V _{OH}	Receiver high-level output voltage	I _{OH} = -8 mA		4.0	VCC-0.3		V
V _{OL}	Receiver low-level output voltage	I _{OL} = 8 mA			0.2	0.4	V
I _i	DE=0, VCC=0 or VCC=5.5V	VI=12V			30	120	μA
		VI=-7V		-100	-50		μA
RA, RB	Bus input impedance	VA=-7V, VB=12V or VA=12V, VB=-7V		96			kΩ
I _{OZ}	Receiver high-impedance output current	VO = 0 V or VCC, /RE at VCC		-1		1	μA
I _{OSR}	Receiver output short to ground current	REN=0, DE=VCC			80	95	mA
Logic							
I _{IN}	Input current (RE, DE, D)	4.5V<VCC<5.5V		-5		5	uA
Supply							
I _{CC}	Supply current(quiescent)	Driver and receiver enabled	DE = VCC, /RE = GND, No LOAD		650	800	μA
		Driver enabled, receiver disabled	DE = /RE = VCC, No LOAD		450	600	
		Driver disabled, receiver enabled	DE = /RE = GND, No LOAD		450	600	
		Driver and receiver disabled	DE = GND, /RE = D= VCC, No LOAD		0.5	2	

Switching CHARACTERISTICS

Parameter	Conditions	Min	Typ	Max	Units	
DRIVER						
t_r, t_f	Driver differential-output rise and fall times		300		ns	
t_{PHL}, t_{PLH}	Driver propagation delay	200	300	410		
$t_{SK(P)}$	Driver pulse skew, $ t_{PHL} - t_{PLH} $		50	90		
t_{PHZ}, t_{PLZ}	Driver disable time	RE = 0	50	100	ns	
		RE = VCC	50	100		
t_{PZH}, t_{PZL}	Driver enable time	RE = 0	200	450	ns	
		RE = VCC	2800	4000		
RECEIVER						
t_r, t_f	Receiver output rise and fall times		30		ns	
t_{PHL}, t_{PLH}	Receiver propagation delay time	CL=15 pF	100	150		
$t_{SK(P)}$	Receiver pulse skew, $ t_{PHL} - t_{PLH} $			25		
t_{PHZ}, t_{PLZ}	Receiver disable time		20	65	ns	
t_{PZL}	Receiver enable time	DE = VCC	See Figure 6	130	250	ns
t_{PZH}		DE = 0	See Figure 6	2800	4000	

Test Circuits and Waveforms



Figure 1. DC Driver Test Circuits

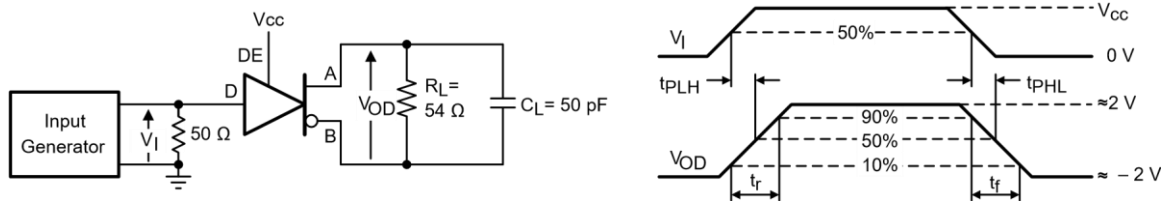


Figure 2. Driver Propagation Delay and Differential Transition Times

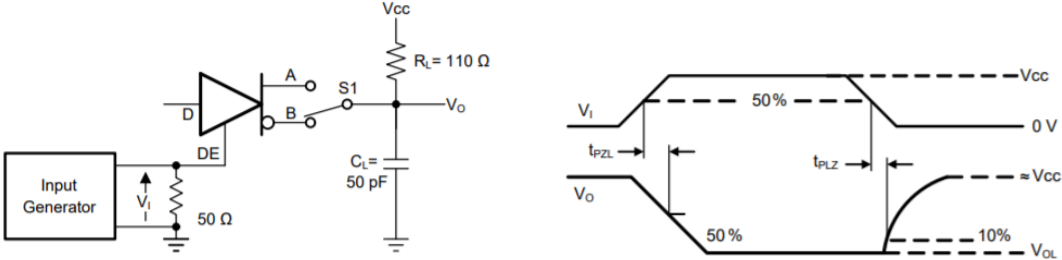


Figure 3. Driver Enable and Disable Times

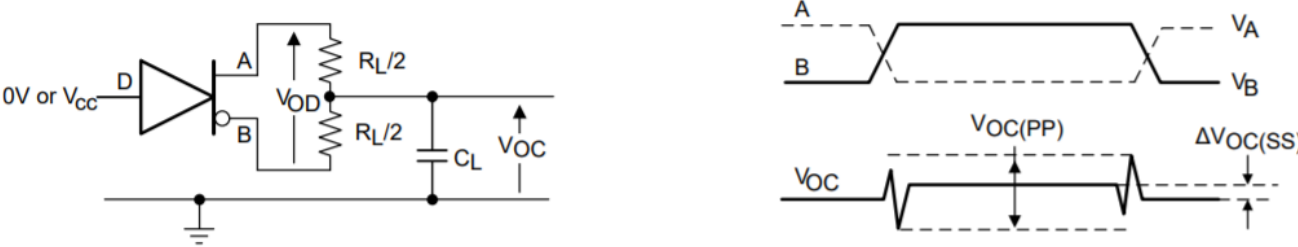


Figure 4. Driver Propagation Delay and Rise/Fall Time Measurement

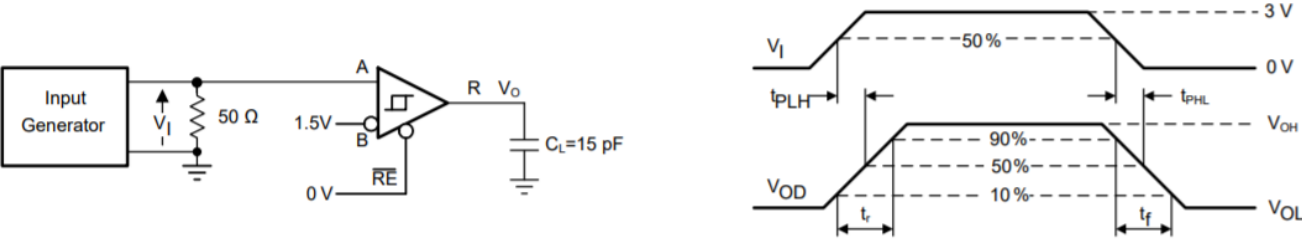


Figure 5. Receiver Propagation Delay and Data rate

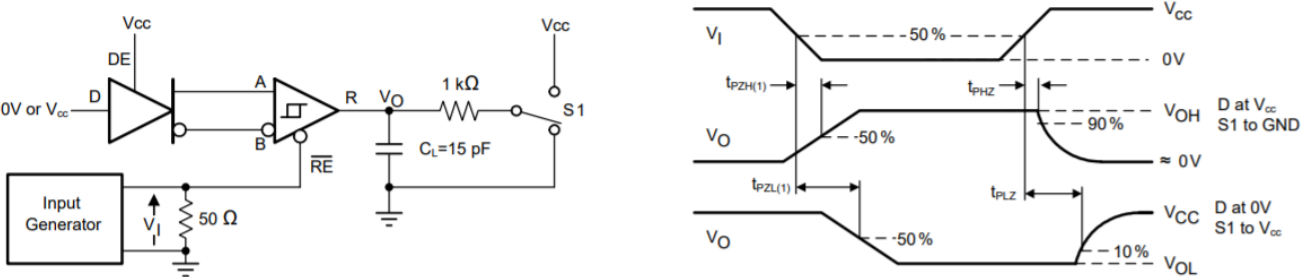
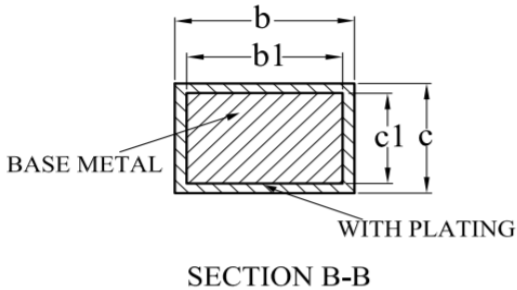
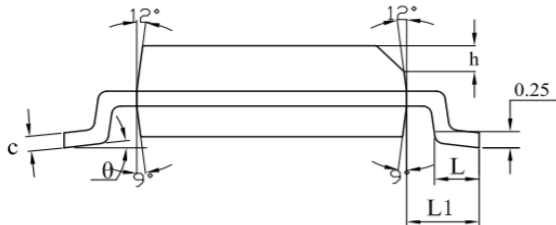
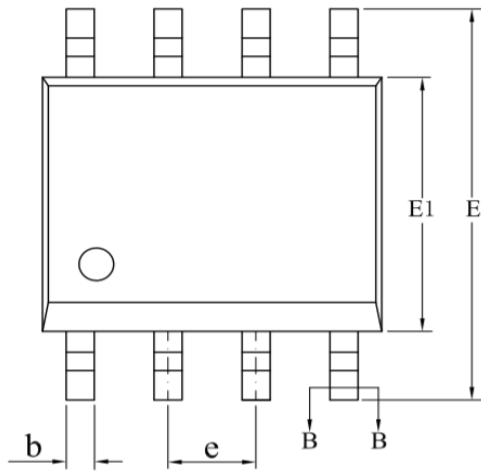
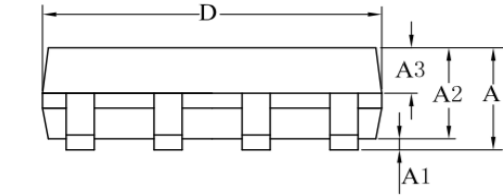


Figure 6. Receiver Enable and Disable Times

Package Outline Dimensions

SO1R (SOP8)



SYMBOL	MILLIMETER		
	MIN	NOM	MAX
A	—	—	1.75
A1	0.10	—	0.225
A2	1.30	1.40	1.50
A3	0.60	0.65	0.70
b	0.39	—	0.47
b1	0.38	0.41	0.44
c	0.20	—	0.24
c1	0.19	0.20	0.21
D	4.80	4.90	5.00
E	5.80	6.00	6.20
E1	3.80	3.90	4.00
e	1.27BSC		
h	0.25	—	0.50
L	0.50	—	0.80
L1	1.05REF		
θ	0	—	8°

IMPORTANT NOTICE AND DISCLAIMER

Copyright© 3PEAK 2012-2023. All rights reserved.

Trademarks. Any of the 思瑞浦 or 3PEAK trade names, trademarks, graphic marks, and domain names contained in this document /material are the property of 3PEAK. You may NOT reproduce, modify, publish, transmit or distribute any Trademark without the prior written consent of 3PEAK.

Performance Information. Performance tests or performance range contained in this document/material are either results of design simulation or actual tests conducted under designated testing environment. Any variation in testing environment or simulation environment, including but not limited to testing method, testing process or testing temperature, may affect actual performance of the product.

Disclaimer. 3PEAK provides technical and reliability data (including data sheets), design resources (including reference designs), application or other design recommendations, networking tools, security information and other resources "As Is". 3PEAK makes no warranty as to the absence of defects, and makes no warranties of any kind, express or implied, including without limitation, implied warranties as to merchantability, fitness for a particular purpose or non-infringement of any third-party's intellectual property rights. Unless otherwise specified in writing, products supplied by 3PEAK are not designed to be used in any life-threatening scenarios, including critical medical applications, automotive safety-critical systems, aviation, aerospace, or any situations where failure could result in bodily harm, loss of life, or significant property damage. 3PEAK disclaims all liability for any such unauthorized use.