

Features

- Wide Supply Voltage: 4.5 V to 36V
- Internal Power FET : 180 mΩ and 90 mΩ
- 0.8-V Reference Voltage with 2% Accuracy
- High-Efficiency Synchronous-Mode Operation
- Fixed Switching Frequency
 - 500 kHz, 1 MHz, 2.2 MHz Optional
- Fixed Output Voltage
 - Fixed 5 V, 3.3 V Optional
- Low 2-μA Shutdown, 70-μA Quiescent Current
- Power-Save Mode or Forced-PWM Mode Optional
- Internal 2-ms Soft-Start Timer
- Internal Loop Compensation
- Over-Current Protection with Hiccup Mode
- Output Over-Voltage Protection
- Thermal Shutdown
- Small Outline Package TSOT23-6
- -40°C to 125°C Operation Ambient Temperature Range

Applications

- 12-V, 24-V Distributed Power Supply
- Industrial Applications
- General Purpose

Description

The TPP36106A series is a simple, easy-to-use, 1-A output, synchronous, step-down, and switch-mode converter with internal power MOSFETs.

The TPP36106A integrates low- $R_{DS(ON)}$ power transistors in the TSOT23-6 package with internal soft-start, compensation, and protection features. The TPP36106A offers a very compact solution to achieve 1-A continuous output current over a wide input supply range, with excellent load and line regulation.

The TPP36106A has different versions of switching frequency at 500-kHz, 1-MHz, and 2.2-MHz, and also supports light load PSM mode to save quiescent current and forced-PWM mode to maintain a fixed switching frequency.

The device is available in the 6-pin TSOT23-6 package with the support of a wide operation ambient temperature range from -40 °C to 125 °C.

Typical Application Circuit

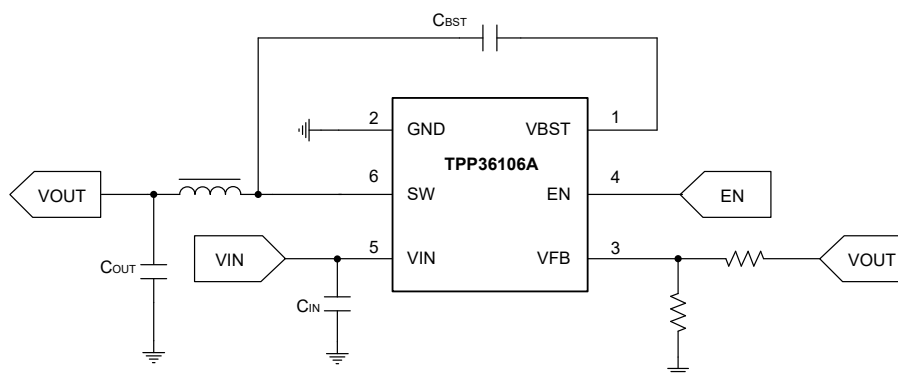


Figure 1. Adjustable Output

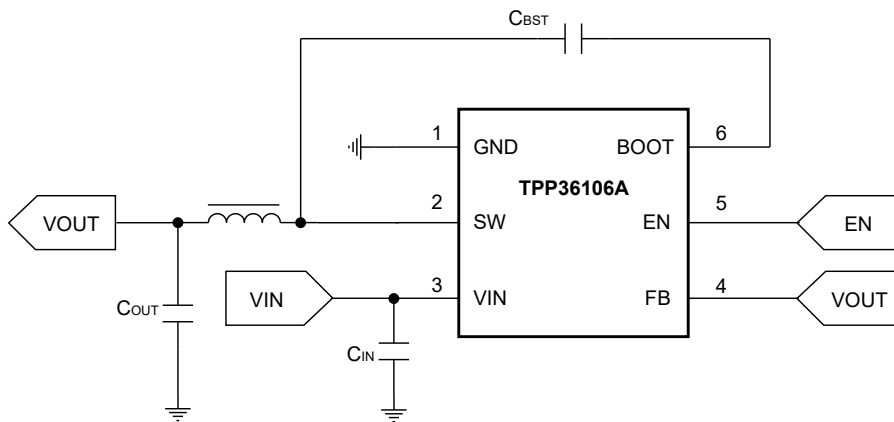
36-V Input, 1-A Synchronous Step-Down Voltage Regulator**Figure 2. Fixed Output**

Table of Contents

Features	1
Applications	1
Description	1
Typical Application Circuit	1
Product Family Table	4
Revision History	4
Pin Configuration and Functions	5
Specifications	7
Absolute Maximum Ratings ⁽¹⁾	7
ESD, Electrostatic Discharge Protection.....	7
Recommended Operating Conditions.....	7
Thermal Information.....	8
Electrical Characteristics.....	9
Typical Performance Characteristics.....	11
Detailed Description	15
Overview.....	15
Functional Block Diagram.....	15
Feature Description.....	15
Application and Implementation	18
Application Information	18
Typical Application.....	18
Layout	21
Layout Guideline.....	21
Layout Recommendations.....	21
Tape and Reel Information	22
Package Outline Dimensions	24
TSOT23-6.....	24
Order Information	25
IMPORTANT NOTICE AND DISCLAIMER	26

Product Family Table

Orderable Part Number	Frequency	Low Output Current Mode	Output Voltage
TPP36106A0-T6TR	500 kHz	Pulse-Skip Mode	Adjustable
TPP36106A1-T6TR	2.2 MHz	Pulse-Skip Mode	Adjustable
TPP36106A2-T6TR	500 kHz	Forced PWM Mode	Adjustable
TPP36106A3-T6TR	2.2 MHz	Forced PWM Mode	Adjustable
TPP36106A4-T6TR	1 MHz	Pulse-Skip Mode	Adjustable
TPP36106A5-T6TR	1 MHz	Forced PWM Mode	Adjustable
TPP36106A53-T6TR	1 MHz	Forced PWM Mode	3.3 V
TPP36106A55-T6TR	1 MHz	Forced PWM Mode	5 V

Revision History

Date	Revision	Notes
2026-03-01	Rev A.0	Initial release.

Pin Configuration and Functions

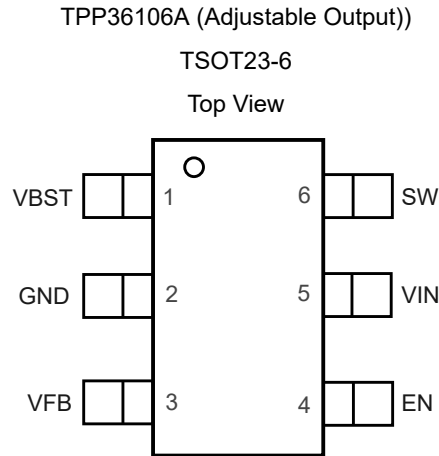
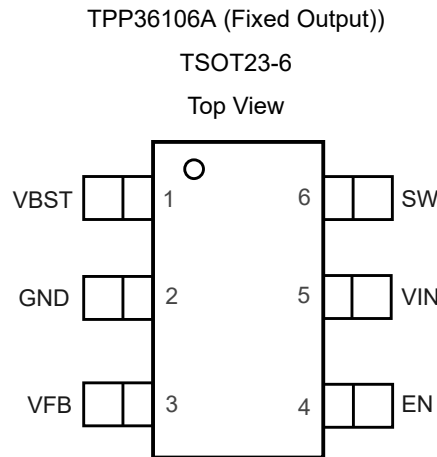


Table 1. Pin Functions: TPP36106A (Adjustable Output)

Pin	Name	I/O	Description
1	VBST	O	High-side MOSFET gate supply pin. Connect 0.1- μ F between VBST and SW pins.
2	GND	G	Ground pin. Power and controller circuit ground. Use a star connection to the GND pin with good contact.
3	VFB	O	Voltage feedback pin. For an adjustable output, connect to the output voltage with a feedback resistor divider.
4	EN	I	Enable input. Active high. Internally weak pulled up.
5	VIN	I	Supply input pin. Connect decoupling 2 \times 10- μ F and 1 \times 0.1- μ F capacitors between VIN and GND pins.
6	SW	O	Switching node, connect to inductor, boot capacitor.

36-V Input, 1-A Synchronous Step-Down Voltage Regulator

Table 2. Pin Functions: TPP36106A (Fixed Output)

Pin	Name	I/O	Description
1	VBST	O	High-side MOSFET gate supply pin. Connect 0.1- μ F between VBST and SW pins.
2	GND	G	Ground pin. Power and controller circuit ground. Use a star connection to the GND pin with good contact.
3	VFB	O	Voltage feedback pin. For a fixed output, connect this pin directly to the output voltage.
4	EN	I	Enable input. Active high. Internally weak pulled up.
5	VIN	I	Supply input pin. Connect decoupling 2 \times 10- μ F and 1 \times 0.1- μ F capacitors between VIN and GND pins.
6	SW	O	Switching node, connect to inductor, boot capacitor.

36-V Input, 1-A Synchronous Step-Down Voltage Regulator
Specifications
Absolute Maximum Ratings ⁽¹⁾

Symbol	Parameter	Min	Max	Unit
V _{IN}	Supply Voltage	-0.3	42	V
SW	Switching Node Voltage	-0.3	42	V
	Switching Node Voltage (50 ns)	-3	42	V
	Switching Node Voltage (20 ns)	-5	42	V
VBST-SW	Bootstrap Voltage	-0.3	5.5	V
FB	Feedback Voltage	-0.3	5.5	V
EN	Enable Input	-0.3	42	V
T _J	Maximum Junction Temperature		150	°C
T _A	Operating Temperature Range	-40	125	°C
T _{STG}	Storage Temperature Range	-65	150	°C
T _L	Lead Temperature (Soldering 10 sec)		260	°C

- (1) Stresses beyond those listed under Absolute Maximum Ratings may cause permanent damage to the device. Exposure to any Absolute Maximum Rating condition for extended periods may affect device reliability and lifetime.
- (2) The inputs are protected by ESD protection diodes to each power supply. If the input extends more than 300 mV beyond the power supply, the input current should be limited to less than 10 mA.
- (3) A heat sink may be required to keep the junction temperature below the absolute maximum. This depends on the power supply voltage and how many amplifiers are shorted. Thermal resistance varies with the amount of PC board metal connected to the package. The specified values are for short traces connected to the leads.

ESD, Electrostatic Discharge Protection

Symbol	Parameter	Condition	Minimum Level	Unit
HBM	Human Body Model ESD	ANSI/ESDA/JEDEC JS-001 ⁽¹⁾	2	kV
CDM	Charged Device Model ESD	ANSI/ESDA/JEDEC JS-002 ⁽²⁾	1.5	kV

- (1) JEDEC document JEP155 states that 500-V HBM allows safe manufacturing with a standard ESD control process.
- (2) JEDEC document JEP157 states that 250-V CDM allows safe manufacturing with a standard ESD control process.

Recommended Operating Conditions

Parameter	Min	Max	Unit	
V _{IN}	Supply Input Voltage Range	4.5	36	V
EN	EN Input Voltage Range	0	36	V
FB	FB Input Voltage Range	0	5.5	V
BOOT – SW	BOOT Input Voltage Range	0	5.5	V
SW	SW Input Voltage Range	0	V _{IN}	V
T _J	Operating Junction Temperature	-40	150	°C

36-V Input, 1-A Synchronous Step-Down Voltage Regulator**Thermal Information**

Package Type	θ_{JA}	θ_{JC}	Unit
TSOT23-6	100	67	°C/W

36-V Input, 1-A Synchronous Step-Down Voltage Regulator
Electrical Characteristics

 All test conditions: $V_{IN} = 12\text{ V}$, $T_A = -40^\circ\text{C}$ to $+125^\circ\text{C}$, unless otherwise noted.

Parameter	Conditions	Min	Typ	Max	Unit		
Power Supply							
V_{IN}	Supply Voltage Range	4.5		36	V		
I_Q	Operating Supply Current	Non-switching, $EN = 5\text{ V}$, $V_{FB} = 1\text{ V}$		70	μA		
I_{QSD}	Shut-Down Supply Current	$EN = \text{GND}$		2	μA		
V_{UVLO_rising}	UVLO Rising Threshold	3.9	4.3	4.5	V		
$V_{UVLO_falling}$	UVLO Falling Threshold	3.7	3.9	4.1	V		
Enable							
V_{ENH}	EN Input Rising Threshold	1.15	1.28	1.35	V		
V_{ENL}	EN Input Falling Threshold	1	1.17	1.2	V		
I_{EN_L}	EN current, $EN = L^{(1)}$	$V_{EN} = 0.9\text{ V}$	0.65	1.04	1.5	μA	
I_{EN_H}	EN current, $EN = H$	$V_{EN} = 1.5\text{ V}$	3.6	4.3	5.2	μA	
I_{EN_HYS}	EN hysteresis current	$V_{EN} = 1.5\text{ V}$		3.3	μA		
Feedback and Power Stage							
V_{FB}	V_{FB} Feedback Voltage	784	800	816	mV		
V_{OUT}	Fixed Output Voltage, 3.3-V version	3.24	3.3	3.36	V		
V_{OUT}	Fixed Output Voltage, 5-V version	4.92	5	5.08	V		
$R_{ds(on)_HSD}$	High-side FET On-Resistance	$I_{SW} = 1\text{ A}$		180	$\text{m}\Omega$		
$R_{ds(on)_LSD}$	Low-side FET On-Resistance	$I_{SW} = 1\text{ A}$		90	$\text{m}\Omega$		
f_{SW}	Switching Frequency	TPP36106A0/2	390	500	590	kHz	
		TPP36106A1/3	1.76	2.2	2.64	MHz	
		TPP36106A4/5	0.8	1	1.2	MHz	
D_{MAX}	Maximum duty cycle		93		%		
t_{ss}	Soft-Start Time		2		ms		
t_{ss_done}	Soft Start Transition Time		18		ms		
I_{skip}	Pulse-Skip Mode Peak Inductor Current Threshold	$V_{IN} = 12\text{ V}$, $V_{OUT} = 5\text{ V}$, $L = 15\text{ }\mu\text{H}$		300	mA		
Current Limit							
I_{Limit_HS}	High-side Current Limit	Inductor peak current		1.2	1.5	1.8	A
I_{Limit_LS}	Low-side Current Limit	Inductor valley current		0.9	1.2	1.5	A
$I_{Limit_LS_neg}$	Negative Low-side Current Limit		0.9			A	
Diagnostics and Protection							
$V_{FB_UVP_rising}$	FB Hiccup Protection Rising Ratio		40		%		
$V_{FB_UVP_falling}$	FB Hiccup Protection Falling Ratio		33		%		

36-V Input, 1-A Synchronous Step-Down Voltage Regulator

Parameter		Conditions	Min	Typ	Max	Unit
V _{FB_OVP_rising}	FB Over-Voltage Protection Rising Ratio			108		%
V _{FB_OVP_falling}	FB Over-Voltage Protection Falling Ratio			107		%
t _{HIC_wait}	Hiccup Protection Wait Time			128		Cycles
t _{HIC_restart}	Hiccup Protection Restart Time			60		ms
Thermal Shut-Down						
T _{SD}	Thermal Shut-Down Temperature			160		°C
T _{SD_hys}	Thermal Hysteresis			10		°C

(1) Guaranteed by design.

36-V Input, 1-A Synchronous Step-Down Voltage Regulator

Typical Performance Characteristics

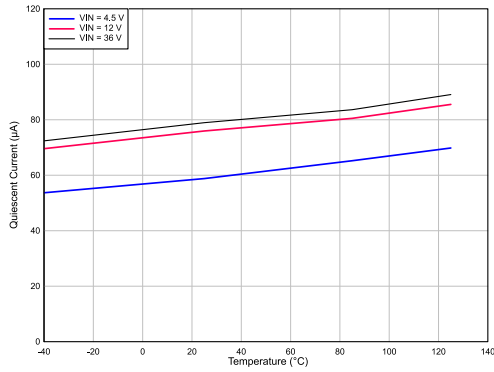


Figure 3. Quiescent Current vs. Supply Voltage

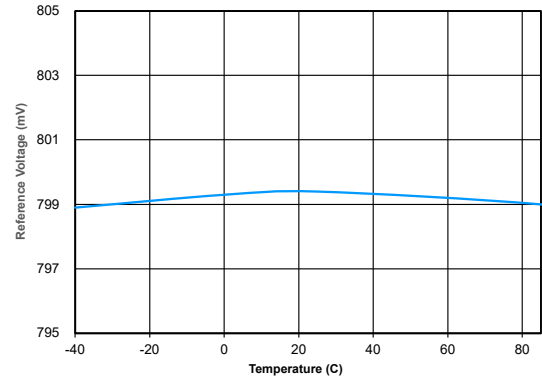


Figure 4. Reference Voltage vs. Temperature

$V_{IN} = 12\text{ V}$

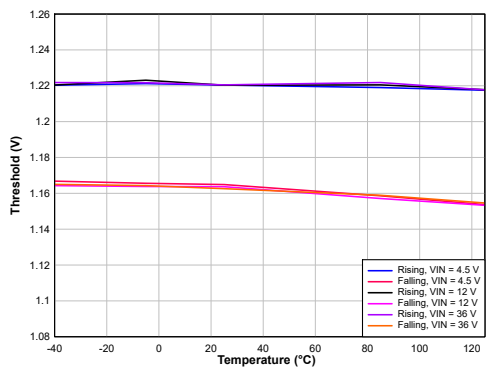


Figure 5. EN Threshold vs. Junction Temperature

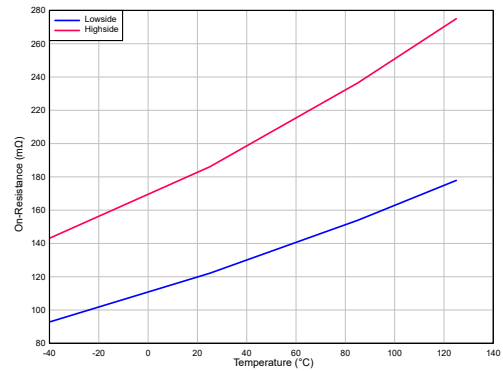


Figure 6. On-Resistance vs. Temperature

$V_{IN} = 12\text{ V}, I_{OUT} = 0.5\text{ A}$

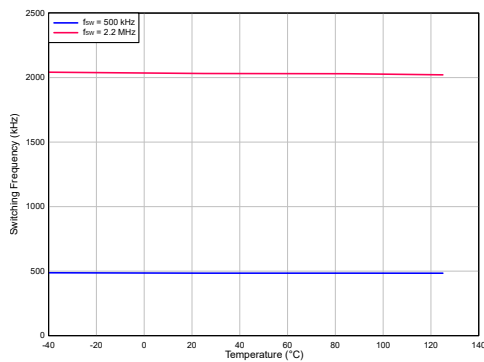


Figure 7. Switching Frequency vs. Temperature

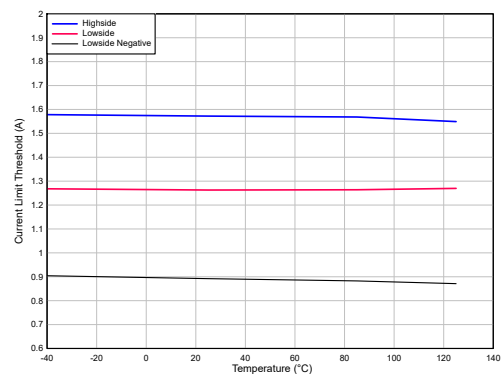


Figure 8. Current Limit vs. Temperature

36-V Input, 1-A Synchronous Step-Down Voltage Regulator

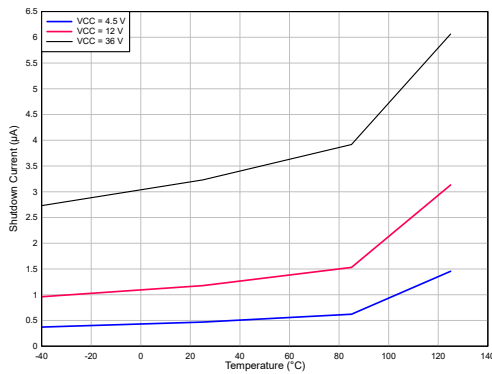


Figure 9. Shutdown Current vs. Junction Temperature

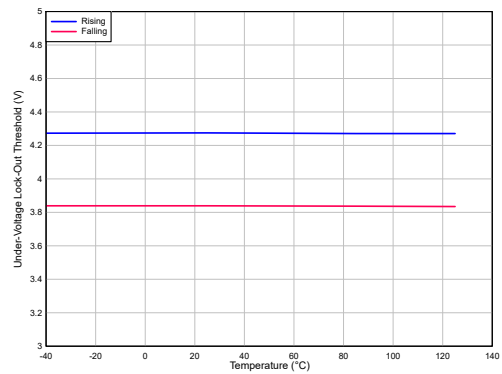


Figure 10. UVLO Threshold vs. Temperature

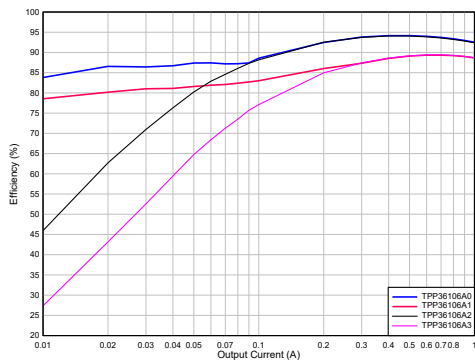


Figure 11. Efficiency vs. Output Current

$V_{IN} = 12\text{ V}, V_{OUT} = 5\text{ V}$

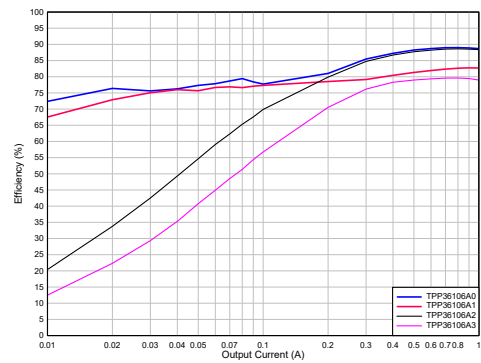


Figure 12. Efficiency vs. Output Current

$V_{IN} = 36\text{ V}, V_{OUT} = 5\text{ V}$

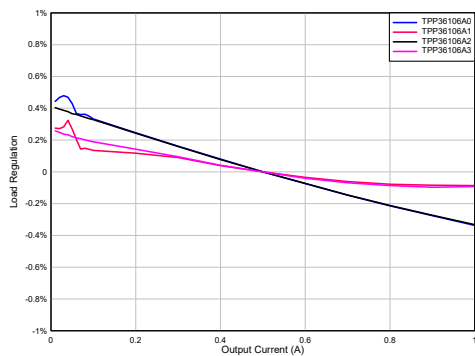


Figure 13. Load Regulation

$V_{OUT} = 5\text{ V}$

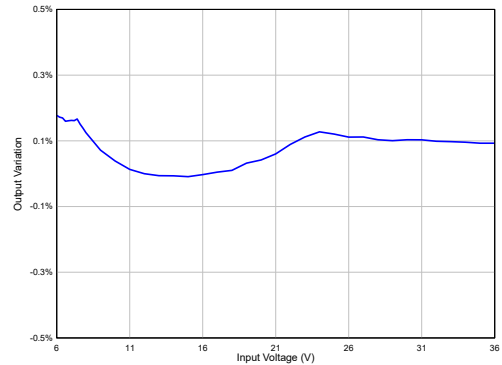


Figure 14. Line Regulation

$V_{OUT} = 5\text{ V}$

36-V Input, 1-A Synchronous Step-Down Voltage Regulator

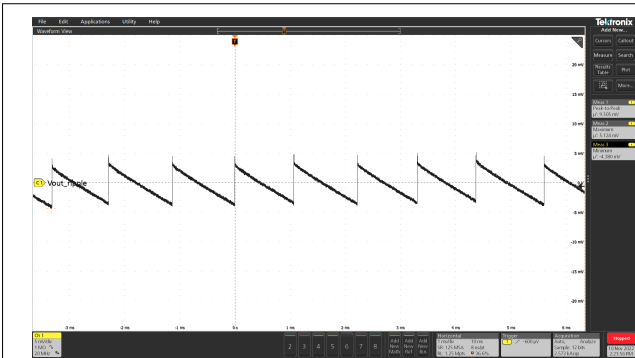


Figure 15. Pulse Skip Mode Output Voltage Ripple

CH1: V_{OUT} Ripple
 $V_{IN} = 12\text{ V}, V_{OUT} = 5\text{ V}, I_{OUT} = 0\text{ A}$

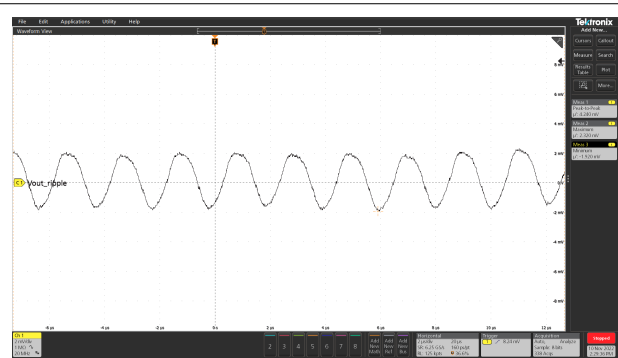


Figure 16. Pulse Skip Mode Output Voltage Ripple

CH1: V_{OUT} Ripple
 $V_{IN} = 12\text{ V}, V_{OUT} = 5\text{ V}, I_{OUT} = 100\text{ mA}$

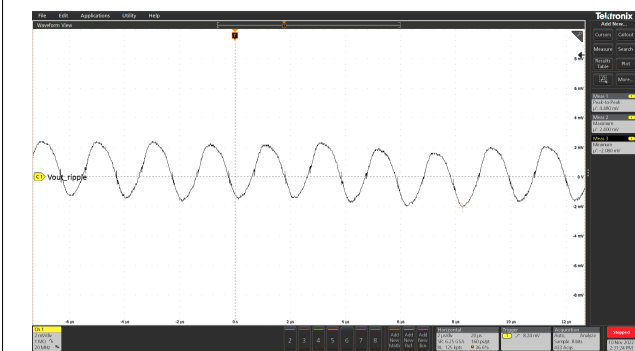


Figure 17. Output Voltage Ripple

CH1: V_{OUT} Ripple
 $V_{IN} = 12\text{ V}, V_{OUT} = 5\text{ V}, I_{OUT} = 1\text{ A}$

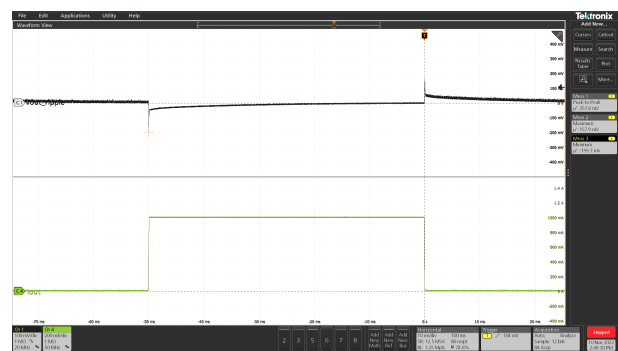


Figure 18. Load Transient

CH1: V_{OUT} Ripple, CH4: Load Current
 $V_{IN} = 12\text{ V}, V_{OUT} = 5\text{ V}, I_{OUT} = 0\text{ A to } 1\text{ A to } 0\text{ A}$

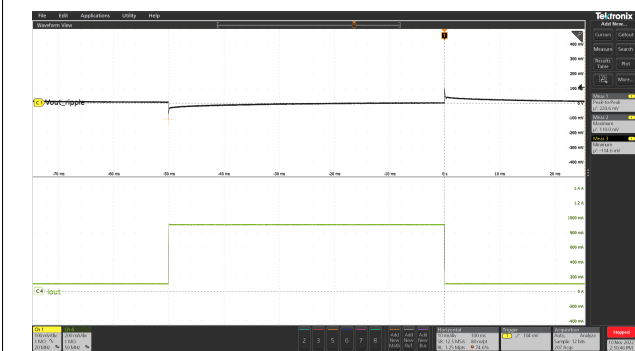


Figure 19. Load Transient

CH1: V_{OUT} Ripple, CH4: Load Current
 $V_{IN} = 12\text{ V}, V_{OUT} = 5\text{ V}, I_{OUT} = 0.1\text{ A to } 0.9\text{ A to } 0.1\text{ A}$

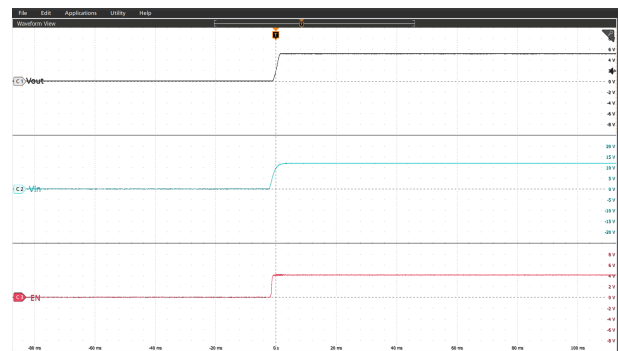


Figure 20. Start-Up by VIN

CH1: V_{OUT}, CH2: V_{IN}, CH3: V_{EN}

36-V Input, 1-A Synchronous Step-Down Voltage Regulator

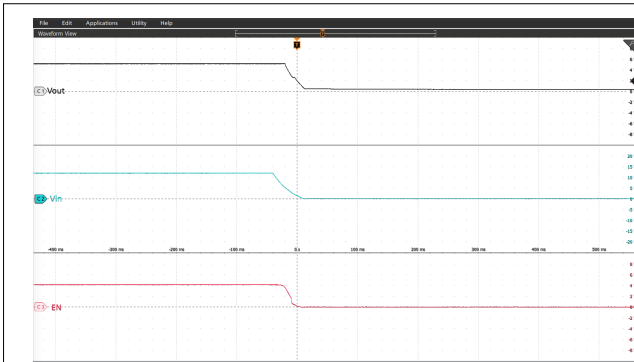


Figure 21. Power-Down by VIN

CH1: V_{OUT}, CH2: V_{IN}, CH3: V_{EN}



Figure 22. Start-Up by EN

CH1: V_{OUT}, CH2: SW, CH3: V_{EN}, CH4: I_L

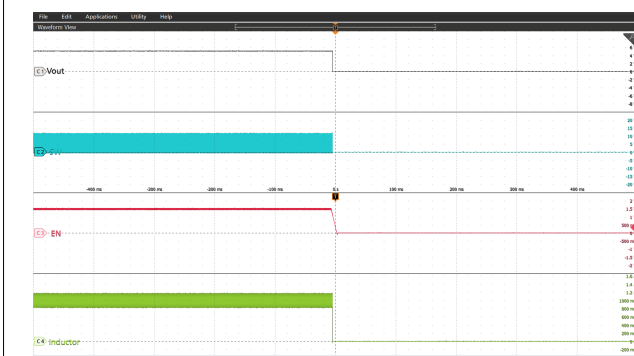


Figure 23. Power-Down by EN

CH1: V_{OUT}, CH2: SW, CH3: V_{EN}, CH4: I_L

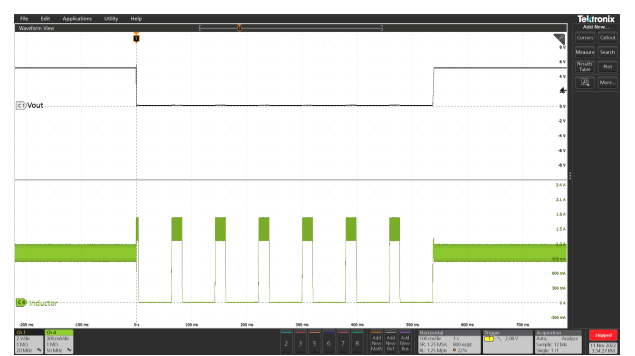


Figure 24. Hiccup Protection

CH1: V_{OUT}, CH4: I_L

Detailed Description

Overview

The TPP36106A is a 1-A synchronous step-down converter. The current mode control topology provides a fast transient response and supports low ESR output capacitors, such as specialty polymer capacitors and multi-layer ceramic capacitors, without extra compensation circuitry.

Functional Block Diagram

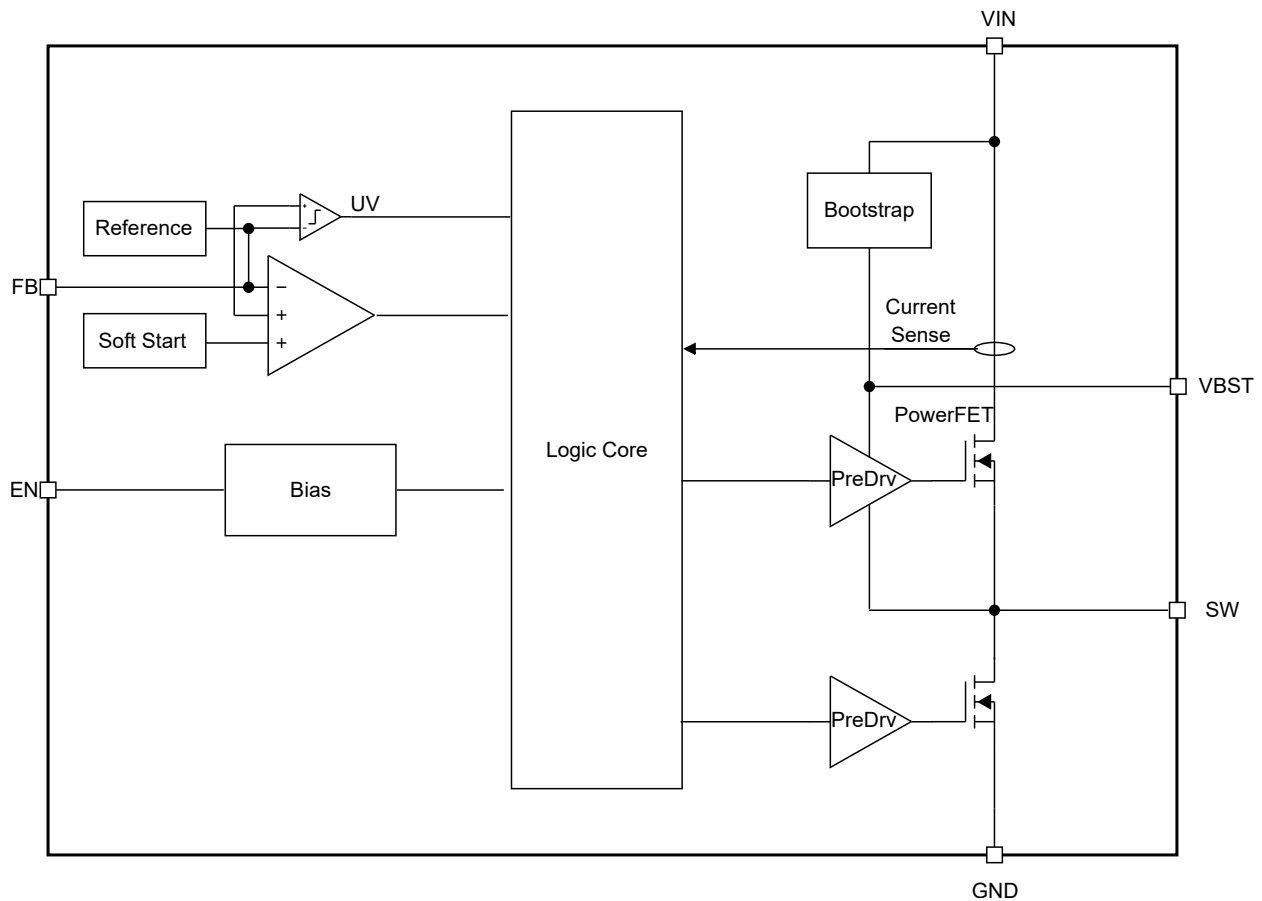


Figure 25. Functional Block Diagram

Feature Description

Current Mode Control

The TPP36106A uses the current mode control topology. The current mode topology supports fixed frequency operation, thus optimizing ripple performance. With integrated low $R_{ds(on)}$, the device can achieve high efficiency in a small physical footprint.

36-V Input, 1-A Synchronous Step-Down Voltage Regulator

Switching Frequency

The TPP36106A supports both 500-kHz (TPP36106A0/TPP36106A2), 1-MHz (TPP36106A4/5), and 2.2-MHz switching frequency (TPP36106A1/TPP36106A3). 500-kHz has better efficiency due to less switching loss, 2.2-MHz supports high-frequency inductors with a small form factor, and 1-MHz is a good balance in between. 3PEAK recommends evaluating thermal performance in 1-MHz and 2.2-MHz scenarios, especially at high-temperature conditions.

Pulse-Skip Mode

To improve light-load efficiency, the TPP36106A0/1/4 will automatically enter improved light-load mode when the inductor ripple valley current reaches zero. The controller keeps the on-time of the high-side switch the same. With a light load, the decay of voltage takes a longer time and lowers the switching frequency accordingly.

Forced-PWM Mode

The TPP36106A2/3/5 has Forced-PWM mode to support low-noise applications. When the inductor ripple valley current reaches zero, the device will automatically enter forced-PWM Mode with a fixed switching frequency. In this mode, the negative current limit of the low-side FET is enabled.

Enable Input

The device EN has two current sources to pull EN up high: I_{EN} and I_{HYS} . When EN is low, the I_{EN} is enabled as I_{EN_L} . When EN rises above the threshold and turns hysteresis current I_{EN_SYS} on, the total current is I_{EN_H} .

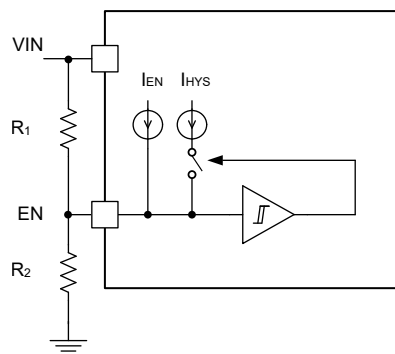


Figure 26. EN Block Diagram

The EN threshold can be set via the equations below:

$$R_1 = \frac{V_{ENL}(V_{IN_START} - V_{ENH}) - V_{ENH}(V_{IN_STOP} - V_{ENL})}{V_{ENH} \cdot I_{ENH} - V_{ENL} \cdot I_{ENL}} \quad (1)$$

$$R_2 = \frac{V_{ENH}}{I_{ENL} + \frac{V_{IN_START} - V_{ENH}}{R_1}} \quad (2)$$

Soft-Start with Pre-Biased Capability

Once EN becomes high, the device ramps up its internal reference voltage with a fixed 2-ms rise time. When the output capacitor is pre-charged, the soft-start ramp will only enable output switching after internal reference ramps above the FB voltage.

36-V Input, 1-A Synchronous Step-Down Voltage Regulator**Over Current Protection**

The device has a cycle-by-cycle current limit. During the OFF state, once the over current is detected at the ripple current valley by measuring the low-side FET current, the device keeps the low-side FET OFF until the current falls below the over-current protection (OCP) threshold. The device has a negative current and can block reverse current when the reverse inductor current is higher than the threshold.

Output Undervoltage Hiccup Protection

When the device output voltage falls below the hiccup voltage threshold, the device gets into hiccup mode by turning off the device and restarting after the hiccup timer (typically 60 ms) expires.

To support a large output capacitance as large as 1 mF, the device has an extended soft start transition timer. Upon power up, the device gets into soft-start and prevents the device from output under voltage hiccup protection mode until soft start transition time t_{ss_done} is over.

Undervoltage Lockout (UVLO) Protection

Once the input voltage falls below the UVLO threshold, the device is shut off. Once the device recovers above the UVLO threshold, the device returns to normal operation.

Over-Temperature Shutdown

Once the junction temperature rises across the internal over-temperature shutdown threshold, the device shuts off and recovers when the temperature falls below the threshold with hysteresis.

Application and Implementation

Note

Information in the following application sections is not part of the 3PEAK's component specification and 3PEAK does not warrant its accuracy or completeness. 3PEAK's customers are responsible for determining suitability of components for their purposes. Customers should validate and test their design implementation to confirm system functionality.

Application Information

As an easy-to-use, industrial pinout, step-down voltage regulator, also known as a buck regulator, the TPP36106A usually converts a higher input voltage to the desired output voltage set by the VFB resistor divider. The maximum output current is 1 A. The following section depicts a simplified design flow of circuitry for the TPP36106A.

Typical Application

As an easy-to-use, industrial pinout, step-down voltage regulator, also known as a buck regulator, the TPP36106A usually converts a higher input voltage to the desired output voltage set by the VFB resistor divider. The maximum output current is 1 A. The following section depicts a simplified design flow of circuitry for the TPP36106A.

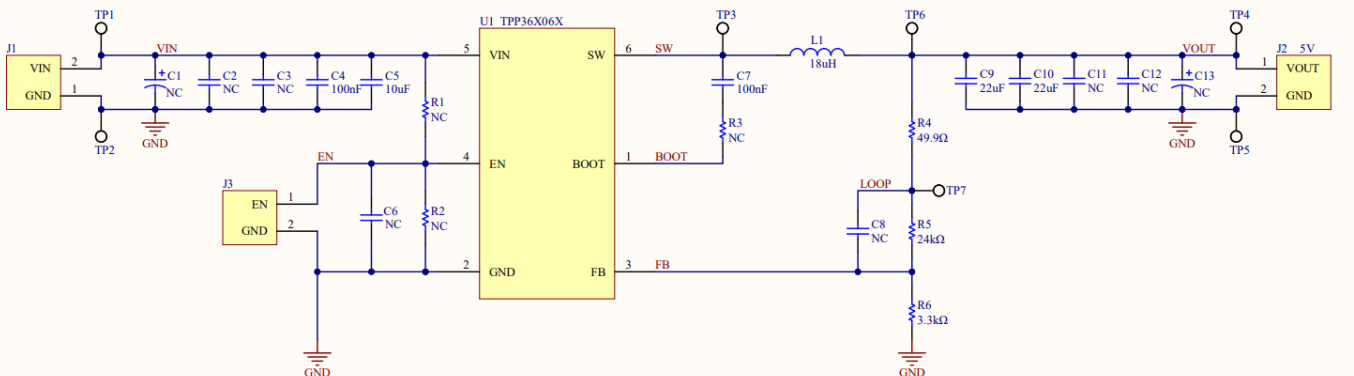


Figure 27. Typical Application Circuit

The following steps provide how to design a buck solution for the TPP36106A0 based on the above.

1. To establish the desired output voltage (V_{OUT}), employ [Equation 3](#) and proceed with the selection of the resistor divider (R_{HS}/R_{LS}).

$$R_{HS} = R_{LS} \cdot \left(\frac{V_{OUT}}{0.8} - 1 \right) \quad (3)$$

2. For the selection of the output inductor (L_O), determine the minimum value (L_{O_MIN}) by applying equations below.

$$I_{RIPPLE} = \frac{V_{OUT} \cdot (V_{IN_MAX} - V_{OUT})}{V_{IN_MAX} \cdot L_O \cdot f_{SW}} \quad (4)$$

$$L_{O_MIN} = \frac{V_{OUT} \cdot (V_{IN_MAX} - V_{OUT})}{V_{IN_MAX} \cdot f_{SW} \cdot I_{OUT} \cdot \Gamma} \quad (5)$$

$$I_{LO_RMS} = \sqrt{I_{OUT}^2 + \frac{I_{RIPPLE}^2}{12}} \quad (6)$$

$$I_{LO_PEAK} = I_{OUT} + \frac{I_{RIPPLE}}{2} \quad (7)$$

36-V Input, 1-A Synchronous Step-Down Voltage Regulator

Where V_{IN_MAX} represents the maximum input voltage, r denotes the ratio between the inductor ripple current (I_{RIPPLE}) and the maximum output current (I_{OUT}), I_{LO_RMS} signifies the RMS inductor current, and I_{LO_PEAK} represents the peak inductor current. Typically, a value of 0.2-0.5 is chosen when utilizing low ESR output capacitors. For the TPP36106A0 with an f_{SW} of 500kHz, we recommend selecting an inductor with $I_{OUT} = 1A$ and $r=0.5$, regardless of the operating conditions.

For example, when $V_{IN} = 36V$ and $V_{OUT} = 5V$, the minimum value of the output inductor $L_{(LO_MIN)}$ is calculated to be approximately 17.2 μH . In this case, a standard inductor with a rating of 18 μH , a saturation current of 2.05 A, and a rated current of 1.5 A would be suitable.

3. Choose the Output Capacitor (C_{OUT})

For the selection of the output capacitor (C_{OUT}), the minimum value (C_{O_MIN}) is determined by employing equations below.

$$C_{O_MIN} \geq \frac{2\Delta I_{OUT}}{f_{SW} \cdot \Delta V_{OUT}} \quad (8)$$

$$C_{O_MIN} \geq L_O \cdot \frac{I_{OI}^2 - I_{OF}^2}{V_f^2 - V_i^2} \quad (9)$$

$$\Delta I_{OUT} = I_{OI} - I_{OF} \quad (10)$$

$$C_{O_MIN} \geq \frac{I_{RIPPLE}}{8f_{SW} \cdot V_{O_RIPPLE}} \quad (11)$$

$$R_{ESR} \leq \frac{V_{O_RIPPLE}}{I_{RIPPLE}} \quad (12)$$

$$I_{CO_RMS} \geq \frac{V_{OUT} \times (V_{IN_MAX} - V_{OUT})}{\sqrt{12} \cdot V_{IN_MAX} \cdot L_O \cdot f_{SW}} \quad (13)$$

Where ΔI_{OUT} represents the change in output current, I_{OI} signifies the heavy load output current, and I_{OF} represents the light load output current during the load transient. ΔV_{OUT} denotes the allowable change in output voltage, while V_i represents the initial output voltage, and V_f represents the maximum allowable output voltage during the transient from light load to heavy load. V_{O_RIPPLE} represents the maximum allowable value of output voltage ripple under maximum output current conditions. R_{ESR} indicates the equivalent series resistance of the output capacitor, and I_{CO_RMS} represents the RMS current of the output capacitor.

As an example, let's consider $V_{OUT} = 5V$, $\Delta I_{OUT} = 0.75A - 0.25A = 0.5A$, $V_{O_RIPPLE} < 25mV$, and $\Delta V_{OUT} < 100mV$. In this case, a minimum output capacitance of approximately 20 μF with an ESR of less than 53 $m\Omega$ is calculated. Therefore, with capacitance derating in consideration, 2 * 22 μF ceramic capacitors rated at 25 V with an ESR of 5 $m\Omega$ will be used.

4. Choosing the Bootstrap Capacitor (C_{BST})

To ensure proper operation of the TPP36106A device, a 0.1 μF ceramic capacitor should be connected between the BOOT and SW pins. It is recommended to use a ceramic capacitor with X5R or superior grade dielectric and a voltage rating of 10 V or higher.

5. Choosing the Input Capacitor (C_{IN})

To ensure proper operation of the TPP36106A device, it is necessary to connect a 10 μF capacitor between the VIN and GND pins with a short PCB trace. It is recommended to use a ceramic capacitor with X5R or superior grade dielectric and a voltage rating of 50 V or higher. Additionally, it is common to include a 0.1 μF , 50 V decoupling ceramic capacitor as an input capacitor.

36-V Input, 1-A Synchronous Step-Down Voltage Regulator
Component Selection

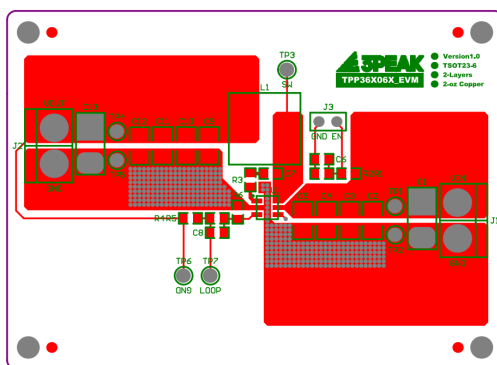
EVM: V _{OUT} = 5 V						
RefDes	Value	Description	Package	MFR	Part No.	Qty
U1		Buck Converter, 42 V, 1 A, 500 kHz, PFM	TSOT23-6	3PEAK	TPP36106A0-T6TR	1
C1	NC					0
C2	NC					0
C3	NC					0
C4	100nF	Capacitor, 100 nF, 50 V DC, X7R, ±10%	0805	YAGEO	CC0805KRX7R9BB104	1
R1	NC					0
C5	10uF	Capacitor, 10 uF, 50 V DC, X7R, ±15%	1210	muRata	GXM32ER71H106KA10L	1
R2	NC					0
C6	NC					0
C7	100nF	Capacitor, 100 nF, 50 V DC, X7R, ±10%	0805	YAGEO	CC0805KRX7R9BB104	0
R3	0R	Resistor, 0 Ω, 5%, 0.1W	0603	Panasonic	ERJ-3GEY0R00V	1
L1	18uH	18 uH, 5 ARat, 3.8 ASat, 34.4 mohm	10×4×10mm	Würth	7447798181	1
C8	NC					0
C9	22uF	Capacitor, 22 uF, 25 V DC, X7R, ±15%	1210	muRata	GRM32ER71E226ME15L	1
C10	22uF	Capacitor, 22 uF, 25 V DC, X7R, ±15%	1210	muRata	GRM32ER71E226ME15L	1
C11	NC					0
C12	NC					0
C13	NC					0
R4	49.9Ω	Resistor, 49.9 Ω, ±1%, 0.1 W	0603	Viking	ARG03FTC49R9	1
R5	24K	Resistor, 24 K, ±1%, 0.1 W	0603	Viking	ARG03FTC2402	1
R6	3.3K	Resistor, 3.3 K, ±1%, 0.1 W	0603	Viking	ARG03FTC3301	1

Layout

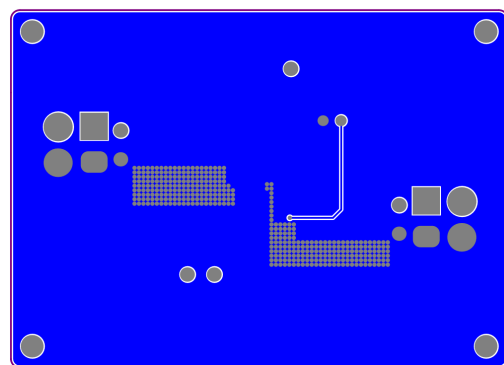
Layout Guideline

- Both input capacitors and output capacitors must be placed to the device pins as close as possible.
- It is recommended to bypass the input pin to ground with a 0.1- μ F bypass capacitor.
- It is recommended to use wide and thick copper to minimize $I \times R$ drop and heat dissipation.

Layout Recommendations

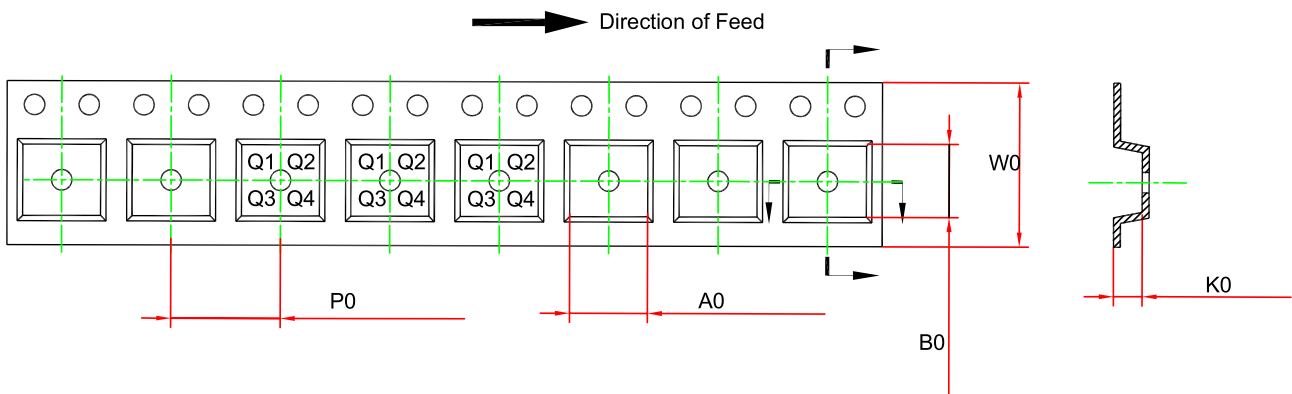
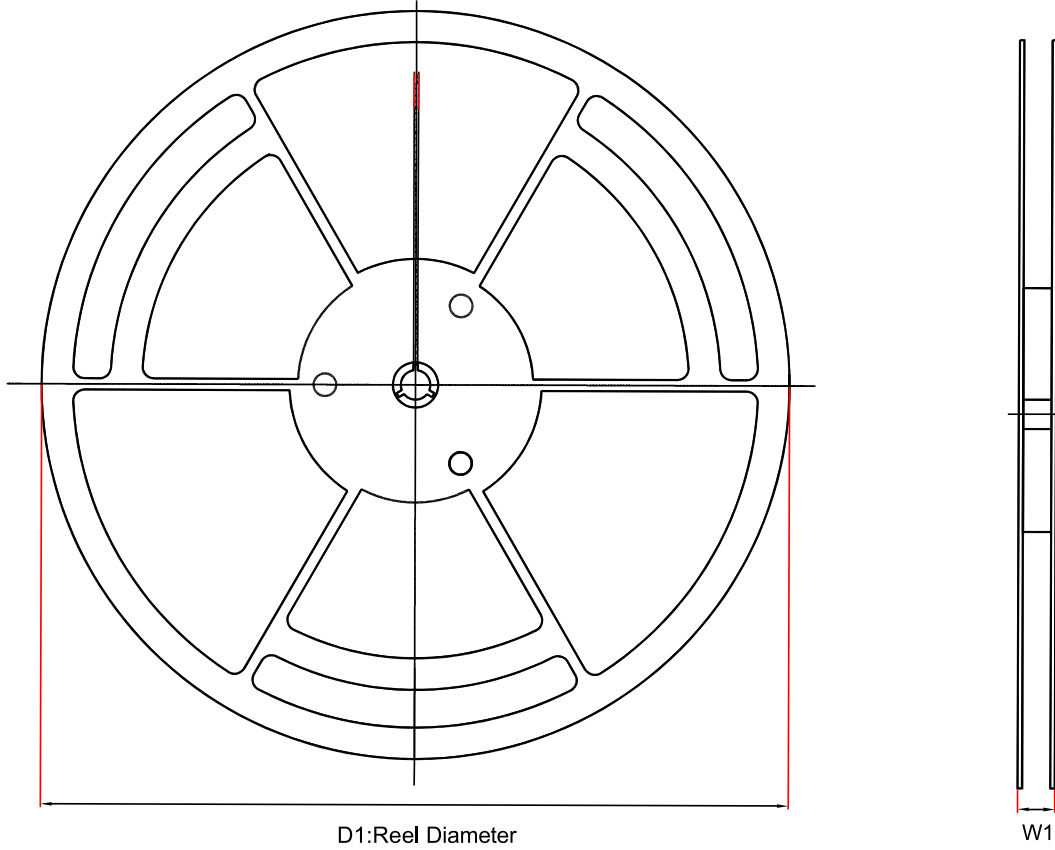


Top Layer



Bottom Layer

Tape and Reel Information



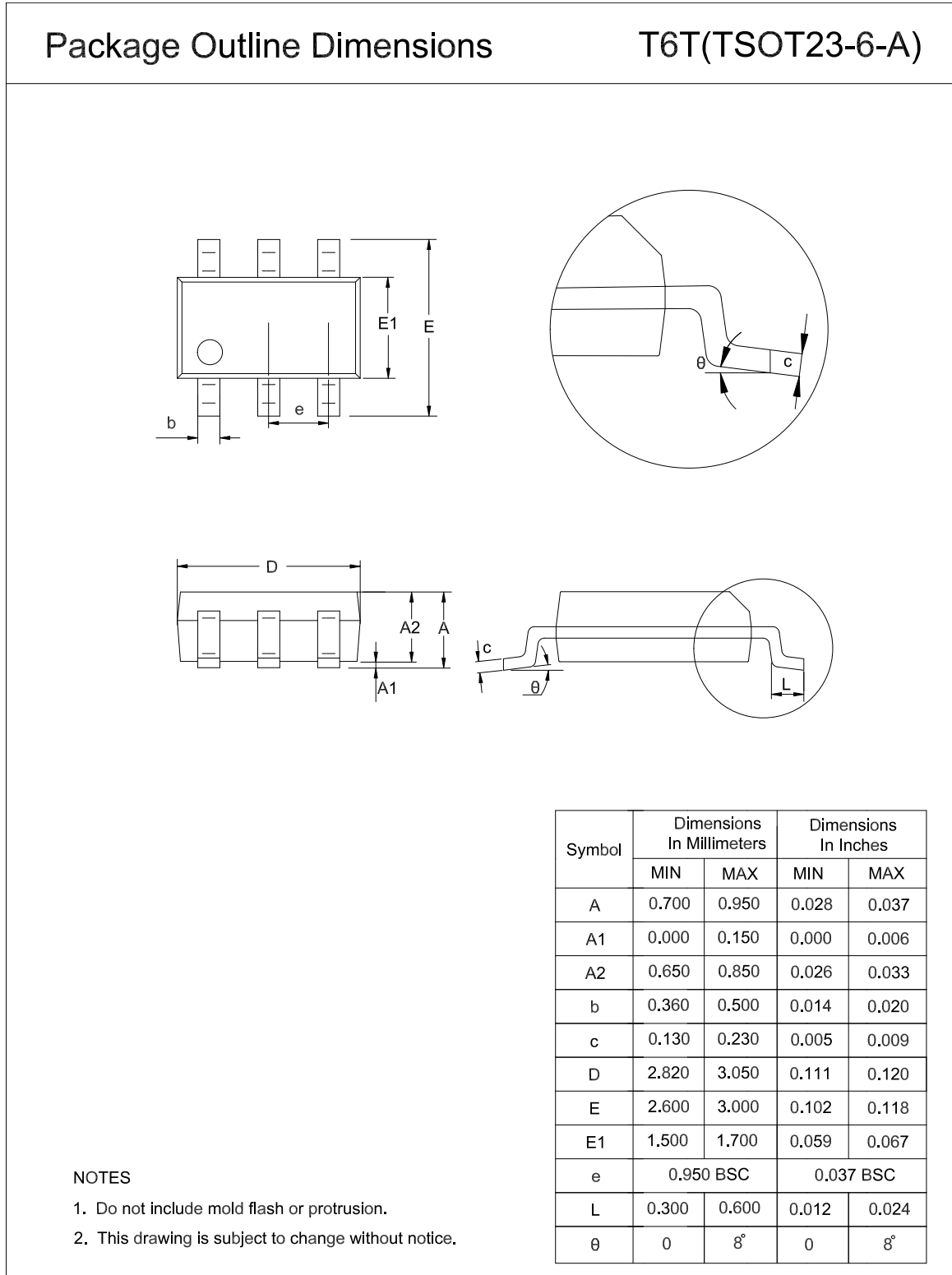
Order Number	Package	D1 (mm)	W1 (mm)	A0 (mm)	B0 (mm)	K0 (mm)	P0 (mm)	W0 (mm)	Pin1 Quadrant
TPP36106A0-T6TR	TSOT23-6	178	12.3	3.2	3.05	1.1	4.0	8.0	Q3
TPP36106A1-T6TR	TSOT23-6	178	12.3	3.2	3.05	1.1	4.0	8.0	Q3

36-V Input, 1-A Synchronous Step-Down Voltage Regulator

Order Number	Package	D1 (mm)	W1 (mm)	A0 (mm)	B0 (mm)	K0 (mm)	P0 (mm)	W0 (mm)	Pin1 Quadrant
TPP36106A2-T6TR	TSOT23-6	178	12.3	3.2	3.05	1.1	4.0	8.0	Q3
TPP36106A3-T6TR	TSOT23-6	178	12.3	3.2	3.2	1.1	4.0	8.0	Q3
TPP36106A4-T6TR	TSOT23-6	178	12.3	3.2	3.05	1.1	4.0	8.0	Q3
TPP36106A5-T6TR	TSOT23-6	178	12.3	3.2	3.05	1.1	4.0	8.0	Q3
TPP36106A53-T6TR	TSOT23-6	178	12.3	3.2	3.05	1.1	4.0	8.0	Q3
TPP36106A55-T6TR	TSOT23-6	178	12.3	3.2	3.05	1.1	4.0	8.0	Q3

Package Outline Dimensions

TSOT23-6



36-V Input, 1-A Synchronous Step-Down Voltage Regulator**Order Information**

Order Number	Operating Temperature Range	Package	Marking Information	MSL	Transport Media, Quantity	Eco Plan
TPP36106A0-T6TR	-40 to 125°C	TSOT23-6	6A0	MSL3	Tape and Reel, 3000	Green
TPP36106A1-T6TR ⁽¹⁾	-40 to 125°C	TSOT23-6	6A1	MSL3	Tape and Reel, 3000	Green
TPP36106A2-T6TR ⁽¹⁾	-40 to 125°C	TSOT23-6	6A2	MSL3	Tape and Reel, 3000	Green
TPP36106A3-T6TR ⁽¹⁾	-40 to 125°C	TSOT23-6	6A3	MSL3	Tape and Reel, 3000	Green
TPP36106A4-T6TR	-40 to 125°C	TSOT23-6	6A4	MSL3	Tape and Reel, 3000	Green
TPP36106A5-T6TR	-40 to 125°C	TSOT23-6	6A5	MSL3	Tape and Reel, 3000	Green
TPP36106A53-T6TR	-40 to 125°C	TSOT23-6	A53	MSL3	Tape and Reel, 3000	Green
TPP36106A55-T6TR ⁽¹⁾	-40 to 125°C	TSOT23-6	A55	MSL3	Tape and Reel, 3000	Green

(1) Contact 3PEAK representatives for more information.

Green: 3PEAK defines "Green" to mean RoHS compatible and free of halogen substances.

IMPORTANT NOTICE AND DISCLAIMER

Copyright© 3PEAK 2012-2026. All rights reserved.

Trademarks. Any of the 思瑞浦 or 3PEAK trade names, trademarks, graphic marks, and domain names contained in this document /material are the property of 3PEAK. You may NOT reproduce, modify, publish, transmit or distribute any Trademark without the prior written consent of 3PEAK.

Performance Information. Performance tests or performance range contained in this document/material are either results of design simulation or actual tests conducted under designated testing environment. Any variation in testing environment or simulation environment, including but not limited to testing method, testing process or testing temperature, may affect actual performance of the product.

Disclaimer. 3PEAK provides technical and reliability data (including data sheets), design resources (including reference designs), application or other design recommendations, networking tools, security information and other resources "As Is". 3PEAK makes no warranty as to the absence of defects, and makes no warranties of any kind, express or implied, including without limitation, implied warranties as to merchantability, fitness for a particular purpose or non-infringement of any third-party's intellectual property rights. Unless otherwise specified in writing, products supplied by 3PEAK are not designed to be used in any life-threatening scenarios, including critical medical applications, automotive safety-critical systems, aviation, aerospace, or any situations where failure could result in bodily harm, loss of life, or significant property damage. 3PEAK disclaims all liability for any such unauthorized use.